

DS-600i

Folder Inserter

The New Standard in Mail Production



quadi<sup>7</sup>ent  
Because connections matter.

# The New Standard in Mail Production

## The highly productive folding inserting system processes an unprecedented variety of mail.

The DS-600i meets the workflow demands of almost every application – from direct marketing to highly sensitive mailings, including medical billing and patient information, to payroll and personal financial statements. Quadient's inline personalization module provides security and the ability to meet privacy compliance requirements. For marketers, it provides unprecedented opportunities to customize mailings. And the DS-600i also has the ability to process flats efficiently and effectively.

## Intelligent Productivity from Start to Finish

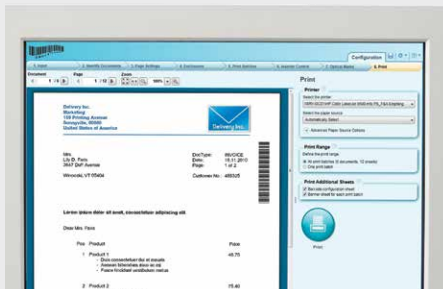


The DS-600i's large color graphic interface reaches new heights in user friendliness and workflow programming. Once a job has been programmed, running it is a simple matter of loading your materials, selecting the job and pressing start. Even changing over to a completely different job takes only minutes.

The DS-600i streamlines productivity every step of the way, from efficient paper loading to predictive intelligence that estimates when your job will be completed.

## Automate Your Document Processing

Quadient's Output Management Software (OMS) simplifies, automates and enhances your document creation process.



- Automatically add a barcode to realize the optimal value of your folder inserter
- Select inserts from multiple trays
- Guarantee your mail's integrity with secure control marks
- Split the print file based on your criteria

## Content Control and System Integrity You Can Rely On

The DS-600i's exclusive CIS scanning device can read any type of code, including OMR 1 and 2 track, 1D and 2D Datamatrix codes. With this technology, the code can be printed anywhere on the document.

The DS-600i IMOS operating system delivers full mailpiece integrity. Each feeder calibrates the first document fed and checks each subsequent document to ensure there are no double feeds.

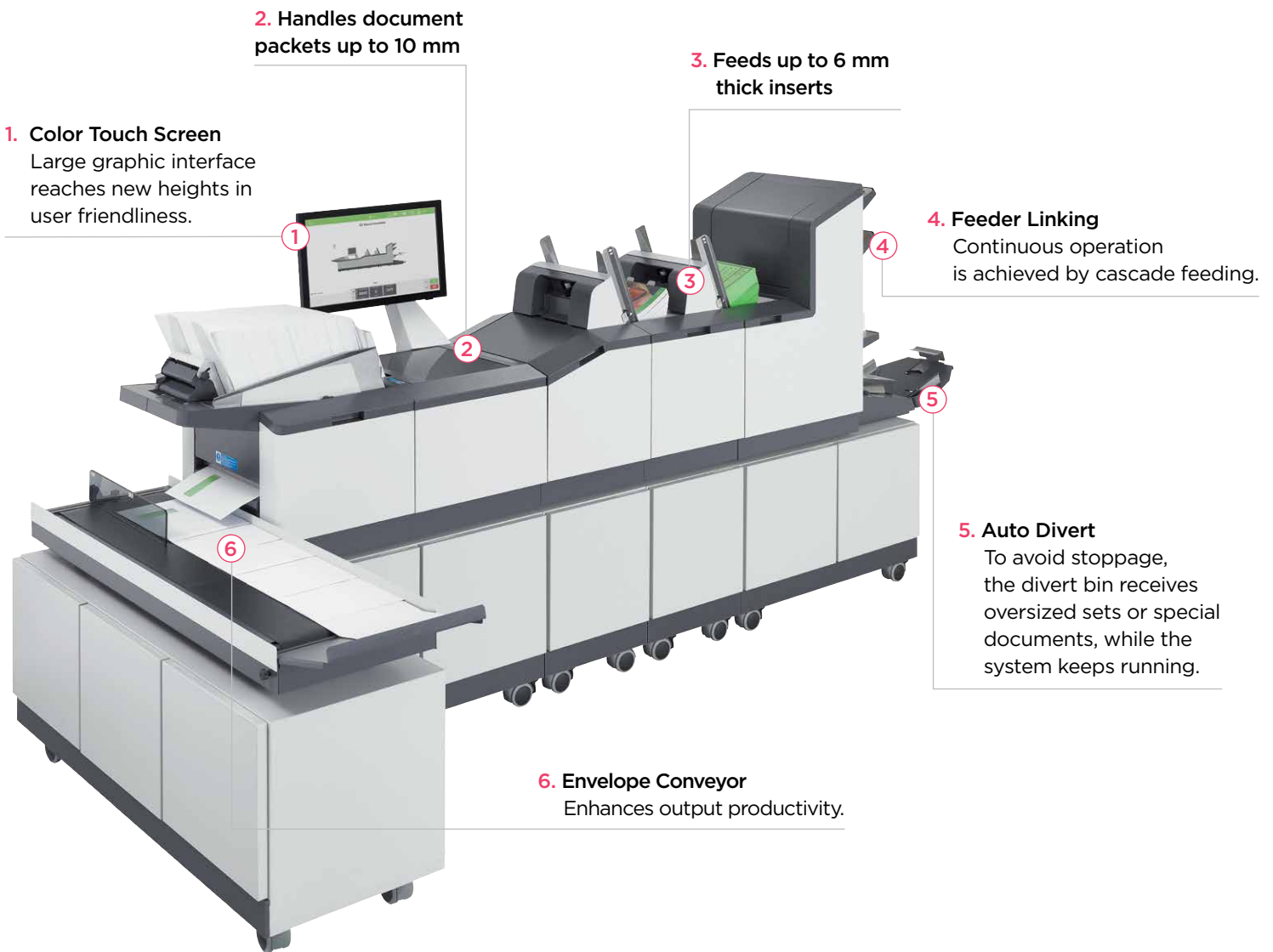
The system records each document at input and then every movement through the system until the completed mailpiece is delivered to the conveyor.

For applications requiring the highest level of security, Quadient's Automated Insertion Management System (AIMS) electronically matches each mailpiece to the project's mailing data file, ensuring complete closed-loop verification.

## Endless Possibilities



Optional document scanning and feeders can be licensed to read OMR, BCR or 2D codes that can be used for either matching personalized inserts with the primary document from the tower folder, or selectively feeding generic inserts based on the primary document's codes.



### Inline Dynamic Envelope Printing (DEP) enhances customer information and security.



The DS-600i fully integrated direct impression envelope printing solution allows you to personalize envelopes as part of the mail assembly process. This eliminates the need for window envelopes and ensures the privacy of important customer information.

When printing in matched mode, each document is recorded by the folder inserter at input. Once the documents have been folded and inserted, the secure system prints the matched name and address on the closed-face envelope.

This process ensures integrity and security, allowing sensitive information to remain confidential.

**DS-600i Specifications**

Processing speed	Up to 6,000 envelopes/hour Up to 12,000 sheets/hour
Color touch screen	Standard (widescreen)
Automatic settings	Standard
Job memory	No limitation
Feeders	Up to 8 modules (8 feeders or 7 feeders plus 1 tower folder)
Document feeder capacity	Up to 2,000 sheets (combinations of 500 and 1,000 sheet hoppers)
Envelope feeder capacity	Up to 800 (500 flats)
Hand feeding	Standard
Multi-sheet feeding	Standard
Cascade from feeders	Standard
Divert bin for documents	Standard
Envelope conveyor	Standard
Automatic double detection	Standard
Folding capacity (one set, single fold)	Up to 8 sheets
LAN embedded	Standard ethernet connection
Fold types	Letter, z-fold, single, double parallel, no fold $\triangle Z \angle \triangle \_$
Document height	Up to 16" portrait feed (folding), 8.5" landscape feed (no folding)
Document width	Up to 8.5" portrait feed (folding), 12" landscape feed (no folding)
Maximum insert thickness	6 mm
Maximum set thickness	10 mm
Envelope length	3.875" to 10"
Envelope width	8.875" to 13"
<b>Options</b>	
Accumulate before folding	Standard
High-capacity document feeder	Up to 1,000 sheets (20 lb.)
Barcode Reader (BCR) for 1D and 2D barcodes	Available
Optical Mark Recognition (OMR)	Available
Output Management Software (OMS)	Available
Automated Insertion Management (AIMS)	Available
Inline Envelope Printing	Available
Mailing system interface	Available
<b>System Dimensions</b>	
DS-600i (one feeder plus tower folder and furniture)	Length x Depth x Height 104" x 25" x 59"
Weight (one feeder plus tower folder and furniture)	880 lbs.

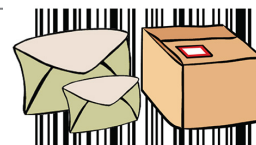
**We've Got You Covered**

Quadient maintains a network of offices across the country to provide local customer support and trained technicians who are ready to assist you. You can be confident that when you need knowledgeable support or expert service, the point-of-contact will be a Quadient office in your area consisting of a team of local professionals.

**About Quadient**

Quadient is the driving force behind the world's most meaningful customer experiences. By focusing on four key solution areas including Customer Experience Management, Business Process Automation, Mail-related Solutions, and Parcel Locker Solutions, Quadient helps simplify the connection between people and what matters. Quadient supports hundreds of thousands of customers worldwide in their quest to create relevant, personalized connections and achieve customer experience excellence. Quadient is listed in compartment B of Euronext Paris (QDT) and belongs to the SBF 120 index.

For more information about Quadient, visit [quadient.com](http://quadient.com).



**WALZ**

Label & Mailing Systems  
624 High Point Ln, East Peoria, IL 61611-9329  
(309) 698-1500 T/F (877) 971-1500  
[www.walzeq.com](http://www.walzeq.com) email: [walz@walzeq.com](mailto:walz@walzeq.com)