

DATAMAN 150/260 SERIES BARCODE READERS

For 1-D linear barcodes, printed higher-density 2-D matrix codes, and direct part mark (DPM) codes, the DataMan® 150/260 series fixed-mount, image-based barcode readers deliver unprecedented performance, flexibility and ease of use.

Highest read rates

DataMan 150/260 series barcode readers achieve the highest possible read rates. Cognex powerful algorithms can decode even the most damaged, scratched and poorly printed 1-D and 2-D codes.

Simplify installation in tight spaces

DataMan 150/260 series models offer straight or right-angled configurations to fit into the tightest spaces. In-line and ninety degree configurations eliminate the need for equipment redesign, and complicated optical paths with mirrors.

Reduce installation time and cost of ownership

Modular lighting and optics make it easy to change DataMan 150 and 260 series reader lenses and lighting in the field. This not only reduces installation time and resources, but protects the ID reader investment by making it easy to optimize performance for each application and accommodate future process changes.

Easy to use tune and trigger buttons

The Tune and Trigger buttons allow for the setup of the application all without a PC or HMI. Whether the code is label based or a DPM code, the tuning algorithm trains the code and automatically adjusts the optics and lighting to deliver an image optimized for your application. The trigger button makes it easy to confirm that the reader has been set up properly. Audible beep or visual LED feedback makes it easy to know when the code is correctly read.

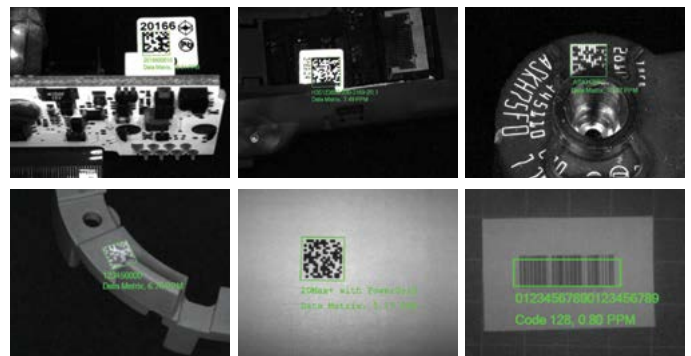
Perfect for DataMan 100/200 series retrofits

The DataMan 150/260 series readers utilize the same mounting configuration and pin out as the DataMan 100/200 series ID readers. This provides easy retrofits into existing DataMan 100/200 applications without adapter plates, or changes to mounting holes and wiring.



Optimal image formation for any code

Codes on round, shiny, highly reflective, or specular surfaces very often require custom illumination to allow them to be read reliably. Low resolution codes and codes at long working distances also present reading challenges. Cognex's modular technology makes reading these codes simple.



1DMax with Hotbars technology deliver high-speed reading of damaged or poorly printed 1-D barcodes as small as 0.8 pixels per module (ppm).

2DMax with PowerGrid technology provides reliable reading of challenging 2-D codes, including previously unreadable 2-D codes without visible perimeters, even when the codes exhibit significant damage to or complete elimination of the finder pattern, clocking pattern, and quiet zone.

SPECIFICATIONS

	150 S	150 QL	150 Q	150 X	152 S	152 QL	152 Q	152 X	260 S	260 QL	260 Q	260 X	262 S	262 QL	262 Q	262 X
1-D and Stacked Codes	■	■	■	■	■	■	■	■	■	■	■	■	■	■	■	■
Omnidirectional 1-D Codes	■	■	■	■	■	■	■	■	■	■	■	■	■	■	■	■
2-D Codes	■		■	■	■		■	■	■		■	■	■		■	■
Algorithms	1DMax, 2DCode	1DMax, Hotbars	1DMax, 2DMax	1DMax, 2DMax, PowerGrid	1DMax, 2DCode	1DMax, Hotbars	1DMax, 2DMax	1DMax, 2DMax, PowerGrid	1DMax, 2DCode	1DMax, Hotbars	1DMax, 2DMax	1DMax, 2DMax, PowerGrid	1DMax, 2DCode	1DMax, Hotbars	1DMax, 2DMax, Hotbars	1DMax, 2DMax, PowerGrid
Image Resolution	752 x 480 Global shutter				1280 x 960 Global shutter				752 x 480 Global shutter				1280 x 960 Global shutter			
Image Sensor	1/3" CMOS				1/3" CMOS				1/3" CMOS				1/3" CMOS			
Acquisition	2 fps	60 fps			2 fps	45 fps			2 fps	60 fps			2 fps	45 fps		
Max Decode Rate	2/sec.	45/sec.			2/sec.	45/sec.			2/sec.	45/sec.			2/sec.	45/sec.		
Lens Options	6.2 mm (3 position or liquid lens, 50..250 mm), 16 mm (manual focus or liquid lens, 80 mm .. 1 m)															
Trigger and Tune Buttons	Yes. Quick Setup Intelligent Tuning															
Aimer	2 Green Aimer LEDs															
Discrete Inputs	2 opto-isolated								2 opto-isolated							
Discrete Outputs	2 opto-isolated								4 opto-isolated							
Status Outputs	5 Status LEDs and Beeper															
Lighting	Modular/Field Configurable Lighting: Four Independently Controlled, High-power LEDs (Red, White, Blue, IR) Band-Pass Filters & Polarizing Filter Available															
Power	5–26 VDC, 2.5 W (USB bus power option) DB-15 pig tail cable, pin compatible to DM100								Two models with 24V +/- 10% or PoE (Power over Ethernet)							
Power Consumption	<2.5 W (USB)								<3.0 W (PoE or external power)							
Communication	RS-232 and USB Interface								RS-232 and Ethernet Interface							
Material	Aluminum															
Weight	128 g								142 g							
Dimensions	Straight: 42.5 mm x 22 mm x 55(63) mm Right-Angle: 42.5 mm x 28(36) x 49.6 mm								Straight: 42.5 mm x 22 mm x 76.1 mm Right-Angle: 42.5 mm x 48.5 mm x 49.6 mm							
Operating Temperature	Temperature (operating) 0 °C–40 °C															
Storage Temperature	Temperature (storage) -10 °C–60 °C															
Operating and Storage Humidity	Humidity < 95% non-condensing															
Protection	IP-65															
RoHS Certified	Yes															
Approvals (CE, UL, FCC)	USA FCC Part 15, Class A; Canada ICES-003; European Community EN55022:2006 +A1:2007, Class A, EN55024:1998 +A1:2001 +A2: 2003, EN60950								Australia C-TICK, AS/NZS CISPR 22 / EN 55022 for Class A Equipment; Japan J55022, Class A; KCC; Safety: IEC 60950-1:2005 (2nd Edition); Am 1:2009							
Operating System	Microsoft Windows XP, 7 and 10															

COGNEX

Companies around the world rely on Cognex vision and barcode reading solutions to optimize quality, drive down costs and control traceability.

Corporate Headquarters One Vision Drive Natick, MA 01760 USA

Regional Sales Offices

Americas

North America +1 844-999-2469
Brazil +55 (11) 2626 7301
Mexico +01 800 733 4116

Europe

Austria +49 721 958 8052
Belgium +32 289 370 75
France +33 1 7654 9318
Germany +49 721 958 8052

Hungary +36 30 605 5480
Ireland +44 121 29 65 163
Italy +39 02 3057 8196
Netherlands +31 207 941 398
Poland +48 717 121 086
Spain +34 93 299 28 14
Sweden +46 21 14 55 88
Switzerland +41 445 788 877
Turkey +90 216 900 1696
United Kingdom +44 121 29 65 163

Asia

China +86 21 6208 1133
India +9120 4014 7840
Japan +81 3 5977 5400
Korea +82 2 539 9980
Malaysia +6019 916 5532
Singapore +65 632 55 700
Taiwan +886 3 578 0060
Thailand +66 88 7978924



WALZ

Label & Mailing Systems
624 High Point Ln., East Peoria, IL 61611-9329
(309) 698-1500 T/F (877) 971-1500
www.walz.com email: walz@walz.com

© Copyright 2017, Cognex Corporation. All information in this document is subject to change without notice. All Rights Reserved. Cognex, the Cognex logo, Hotbars, 2DMax, DataMan and UltraLight are registered trademarks. Cognex Connect, Xpand and Cognex Explorer are trademarks of Cognex Corporation. All other trademarks are the property of their respective owners. Lit. No. DM150/2602P-DS-09-2017

www.cognex.com